

Bhavan's Science Olympiad (BSO) – 2023

Class:- 6
Time:- 1 Hr.

Subject:- Science
Total :- 50 Marks

INSTRUCTIONS:-

- **Question No – 1 to 40 Carries 1 Mark**
- **Question No – 41 to 45 Carries 2 Marks**

1. Which of the following is the smallest bone in our body?
(a) Femur (b) Tibia (c) Stapes (d) Humerus
2. Deficiency of which of the following nutrient causes goitre?
(a) Iodine (b) Fats (c) Carbohydrates (d) Calcium
3. Which of the deficiency diseases occurs due to the lack of minerals in the body?
(a) Rickets (b) Anaemia (c) Scurvy (d) Marasmus
4. Both seeds and leaves of this plant are edible select from the following?
(a) Potato (b) Cabbage (c) Radish (d) Mustard
5. Germination of seed is known as?
(a) Sprouts (b) Saplings (c) Vegetation (d) None of these
6. Roughage helps in?
(a) Protecting our body from diseases
(b) Movement of bowel
(c) Providing energy
(d) Building and repair of various body parts
7. About of the human body weight contains water?
(a) 70% (b) 80% (c) 90% (d) 65%
8. Maize is is an example of?
(a) Rabi crop (b) Kharif Crop (c) Both (d) None of these
9. Which is a set of transparent materials?
(a) Glass and air (b) Water and glass
(c) Water and air (d) All of these
10. Choose the wrong statement?
(a) Heat can destroy magnetic properties of a magnet
(b) Magnets are made to different materials and different shapes.
(c) There is a maximum attraction in middle of a magnet.
(d) Magnetite does not show magnetic properties
11. Which of the Following is a Communicable disease – ?
(a) Measles (b) Cancer
(c) Diabetes (d) chronic lung disease
12. Which of the following plant is an insect eating plant?
(a) Cotton plant (b) Pitcher plant
(c) Bamboo plant (d) Water melon
13. Which among the following planet is the biggest planet of the solar system?
(a) Earth (b) Venus (c) Jupiler (d) Saturn

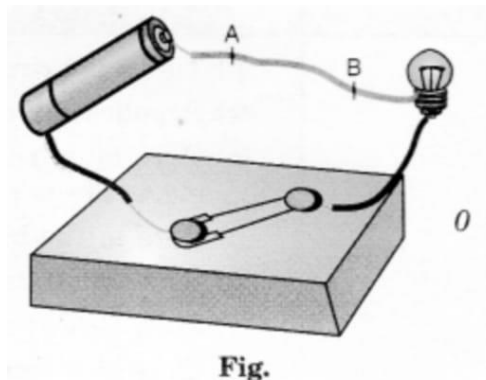
14. Rusting of iron is an example of?
 - (a) Slow change
 - (b) Fast change
 - (c) Reversible change
 - (d) Physical change
15. Which of the following is a chemical change?
 - (a) Evaporation of water
 - (b) Burning of fuels
 - (c) Moving of a wheel
 - (d) Breaking of a brick
16. Which is an example of a shrub?
 - (a) Spinach
 - (b) Mango tree
 - (c) Tomato plant
 - (d) Lemon
17. Which planet is known as Red planet?
 - (a) Spinach
 - (b) Earth
 - (c) Mars
 - (d) Mercury
18. In cockroaches, the body parts helping in movement are ?
 - (a) Three pairs of legs and two pairs of wings
 - (b) Two pairs of legs and two pairs of wings
 - (c) Two pairs of legs and three pairs of wings
 - (d) None of these
19. The number of Cervical Vertebrae in man is?
 - (a) Ten
 - (b) Five
 - (c) Seven
 - (d) Eight
20. Which of the following animals moves with just one large, disc –shape muscular foot?
 - (a) Earthworm
 - (b) Cockroach
 - (c) Snail
 - (d) Tortoise
21. Which of the following are ball and socket joints?

A. Elbow	B. Shoulder joint	C. Knee joint	D. Hip joint
(a) A and B	(b) B and C	(c) A and C	(d) B and D
22. The joint in a cranium is a?
 - (a) Gliding joint
 - (b) Ball and Socket joint
 - (c) Fixed joint
 - (d) Hinge joint
23. Which is an example of an animal found in mountain region?
 - (a) Leopard
 - (b) Yak
 - (c) Mountain goat
 - (d) All of these
24. Which of the following aquatic plants grows Completely Submerged in Water?
 - (a) Water hyacinth
 - (b) Hydrilla
 - (c) Water lily
 - (d) Lotus
25. Which is an aquatic adaptation?
 - (a) Streamlined body
 - (b) Light and hollow bones
 - (c) Hair on body
 - (d) Gills
26. Hibernation is seen in?
 - (a) Lion
 - (b) Tiger
 - (c) Hedge hog
 - (d) Elephant
27. A bar magnet is immersed in a heap of iron fillings and pulled out. The amount of iron filling clinging to the?
 - (a) North pole is almost equal to the South Pole.
 - (b) North pole is much more than the South Pole.
 - (c) North pole is much less than the South Pole.
 - (d) Magnet will be same all along its length.
28. Sandstone is grainy and crumbly and may contain fossils. Its rock type is?
 - (a) Igneous
 - (b) Metamorphic
 - (c) Sedimentary
 - (d) Soft

29. Which type of rock has been formed from hot liquid rock called magma ?
 (a) Igneous (b) Metamorphic
 (c) Mixture (d) Sedimentary
30. Earthquakes are caused due to the collision of?
 (a) Tectonic plates (b) Crust (c) Core (d) Mantle
31. Melting of glaciers may cause?
 (a) Floods (b) Global Warming (c) Drought (d) Earthquake
32. Excessive bleeding during an injury is a deficiency of -----
 (a) Vitamin A (b) Vitamin B (c) Vitamin K (d) Vitamin E
33. What is the adaptation by which a grasshopper protects itself from being eaten by its predator?
 (a) It can hop away quickly
 (b) It tastes bad
 (c) It can camouflage itself in the grass
 (d) It has a poisonous sting
34. Which of the following statement is or are incorrect?
 (a) When the switch in the circuit it open, then the switch is said to be in the off-position
 (b) Sometimes the bulb does not light up or glow even when the switch is in the on position or closed.
 (c) The positive terminal of one cell is joined to the negative terminal of the other cell.
 (d) The symbol for representing a battery for three cells will have four pairs of long and short parallel lines connected to one another.
35. Which of the following planet is closest to earth?
 (a) Mercury (b) Sun (c) Saturn (d) Venus
36. When electric current passes through a wire, it behave like a?
 (a) Battery (b) Magnet (c) Fuse (d) Compass needle
37. Which of the following diseases is caused due to virus?
 (a) Tuberculosis (b) Measles (c) Malaria (d) Cholera
38. Which of the following is incorrect?
 (a) Whale-Lungs (b) Tadepole larva-gills
 (c) Earthworm-moist Skin (d) Spider -lungs
39. Butter, Carrot, Milk, Tomato are good source of
 (a) Vitamin A (b) Vitamin D (c) Both (d) None of these
40. Which of the following is a Complex machine?
 (a) Wheel and axle (b) Screw
 (c) Sewing machine (d) Wedge

ACHIEVER'S SECTION

41. When an electric current flows through a copper wire AB as shown in Figure, the wire?



- (a) Deflects a magnetic needle placed near it
 - (b) Becomes red hot
 - (c) Gives electric shock
 - (d) Behaves like a fuse
42. Xerophthalmia caused due to the deficiency of -----?
- (a) Vitamin B (b) Vitamin A (c) Vitamin C (d) Vitamin E
43. Paheli's mother made concentrated sugar syrup by dissolving sugar in hot water. On cooling crystal of sugar got separated. This indicates a :
- (a) Physical change that can be reversed.
 - (b) Chemical change that can be reversed.
 - (c) Physical change that cannot be reversed.
 - (d) Chemical change that cannot be reversed.
44. Boojho and Paheli were given one mirror each by their teacher. Boojho found his image to be erect and of the same size whereas Paheli found her image erect and smaller in size. This means that the mirrors of Boojho and Paheli are, respectively?
- (a) Plane mirror and concave mirror
 - (b) Concave mirror and convex mirror
 - (c) Plane mirror and convex mirror
 - (d) Convex mirror and plane mirror
45. Which of the following is not an example of a metamorphic rock?
- (a) Limestone (b) Sandstone (c) Both a and b (d) Neither a nor b